

Parallax, Inc. Programming a BASIC Stamp 2, 2e, 2sx, or 2p on a Power Mac

Hardware Needed

- a PowerMac with USB (Universal Serial Bus)
- a Keyspan-brand USB PDA adapter

Software Needed

- OS 8.6 or higher
- Virtual PC 3.0 only
- The latest Keyspan adapter software

Note: Parallax, Inc. has tested this procedure using an iMac with the above hardware and software. This procedure may not work with other configurations.

Setup

- 1) Install the Keyspan software according to the instructions on the Mac OS only. (Do not install the PC version of the Keyspan software).
- 2) Connect the Keyspan adapter to the Mac's USB port and plug the serial connector of the Keyspan adapter to your BASIC Stamp 2, 2e or 2sx. Make sure the BASIC Stamp is powered up.
- 3) Check the control panel under Keyspan USB Serial Assistant to make sure it is seen by the system. See Figure 1 and 2.

Figure 1

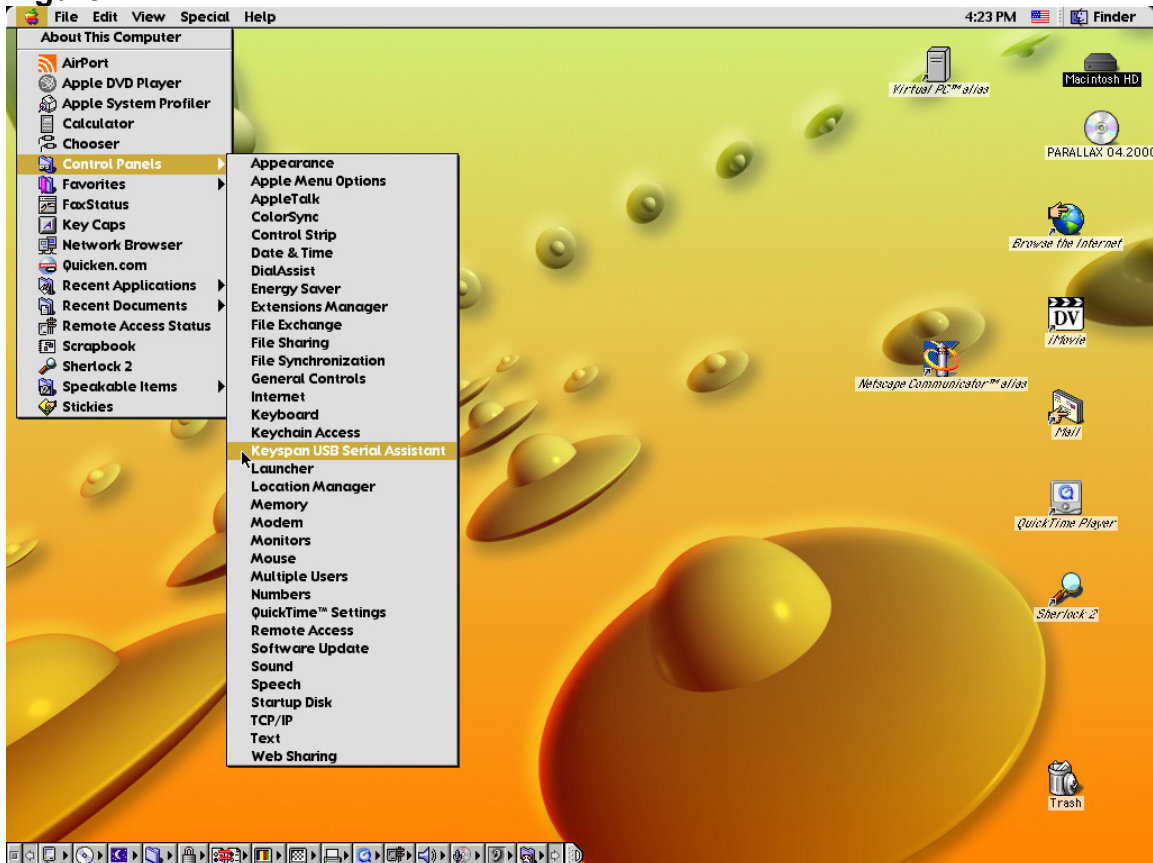
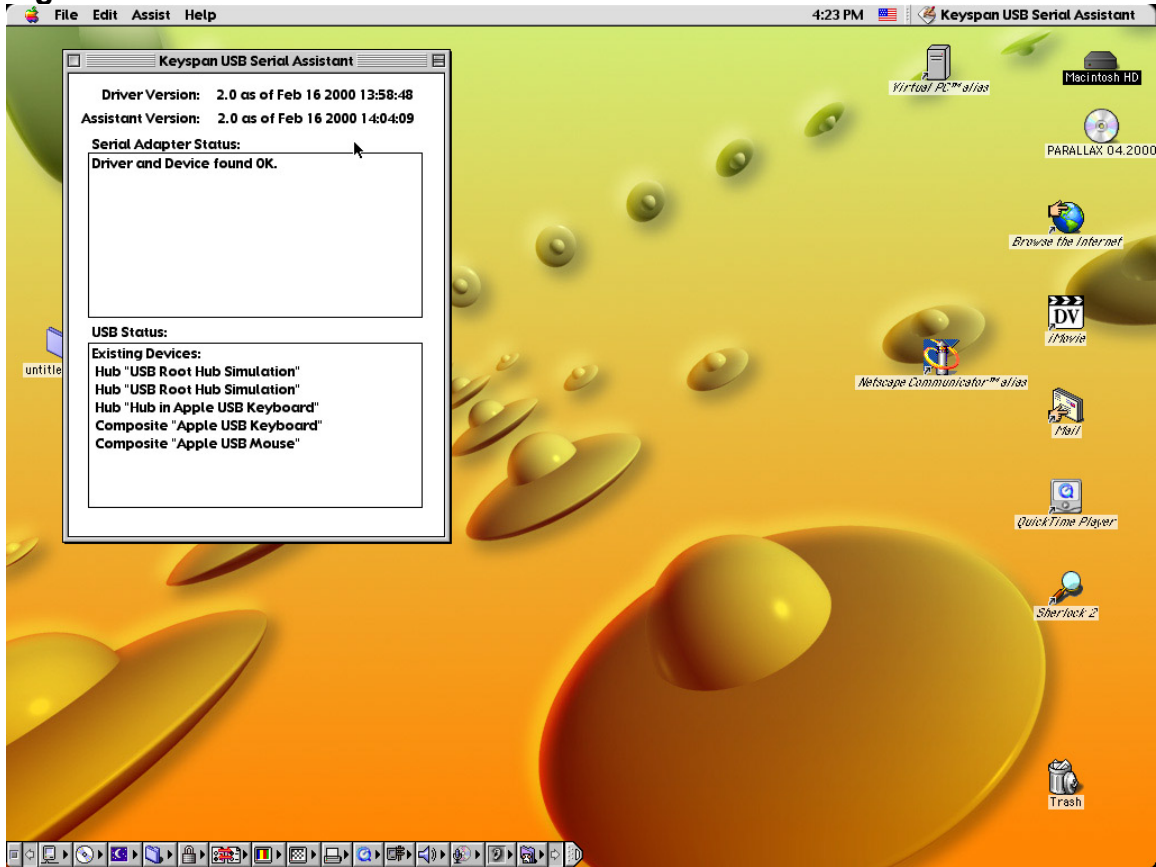


Figure 2



- 4) If the Keyspan USB Serial Assistant is not recognized, be sure that it is plugged into a functional USB port and try Step 3 again.
- 5) Open the Virtual PC software.
- 6) Select Edit -> Preferences to set the necessary preferences for Virtual PC. See Figure 3.

Figure 3

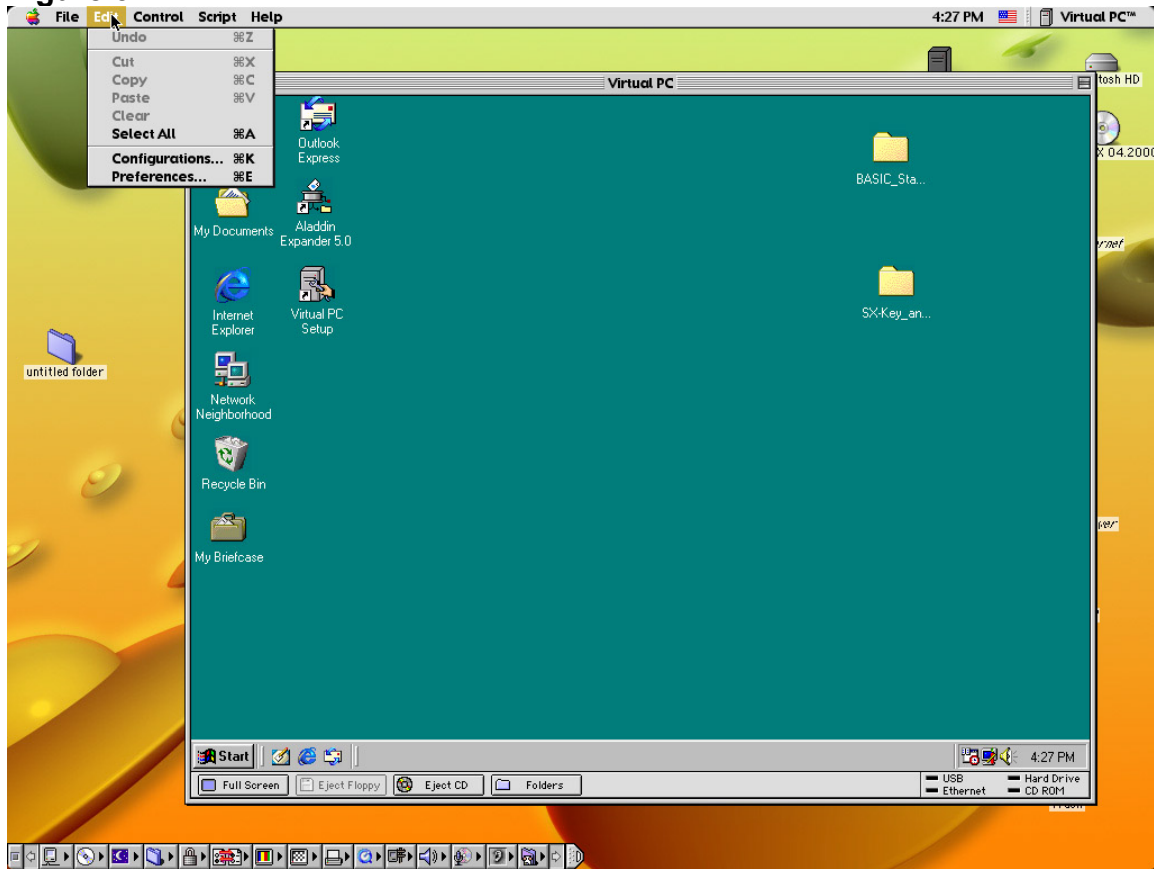
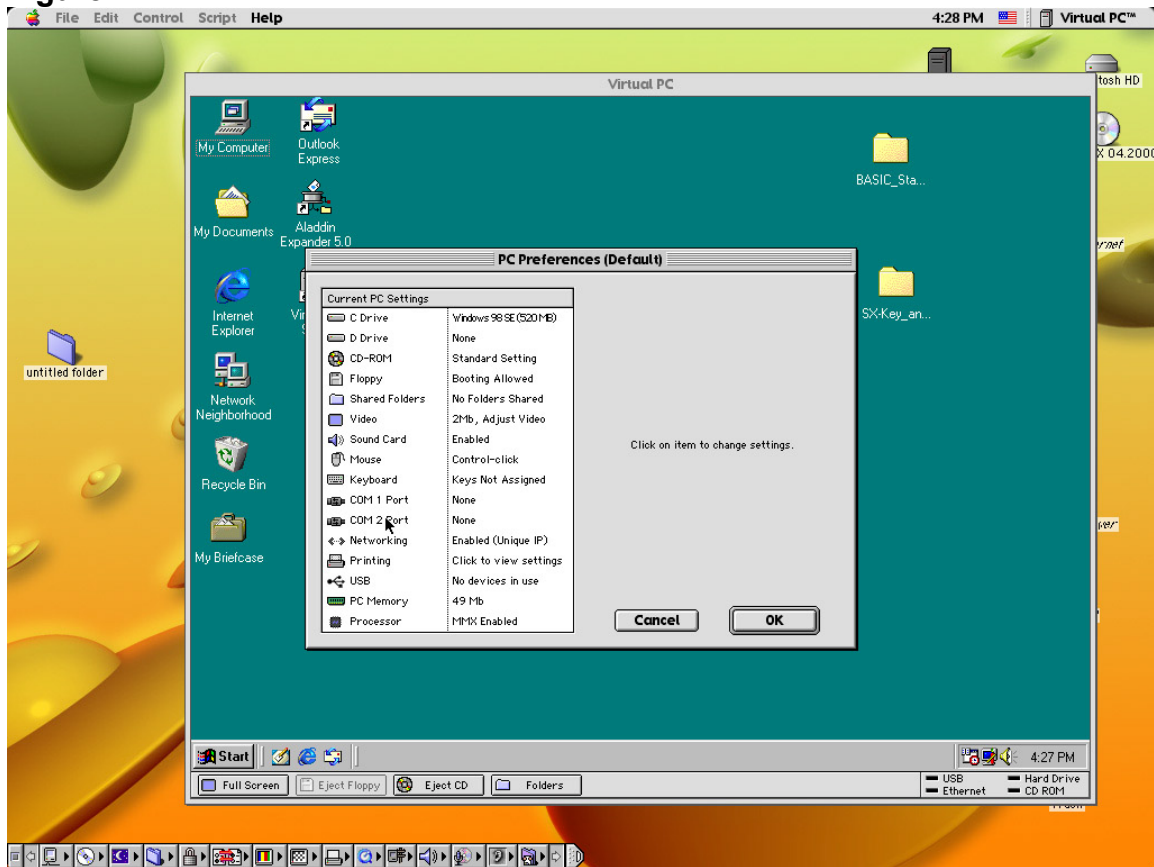
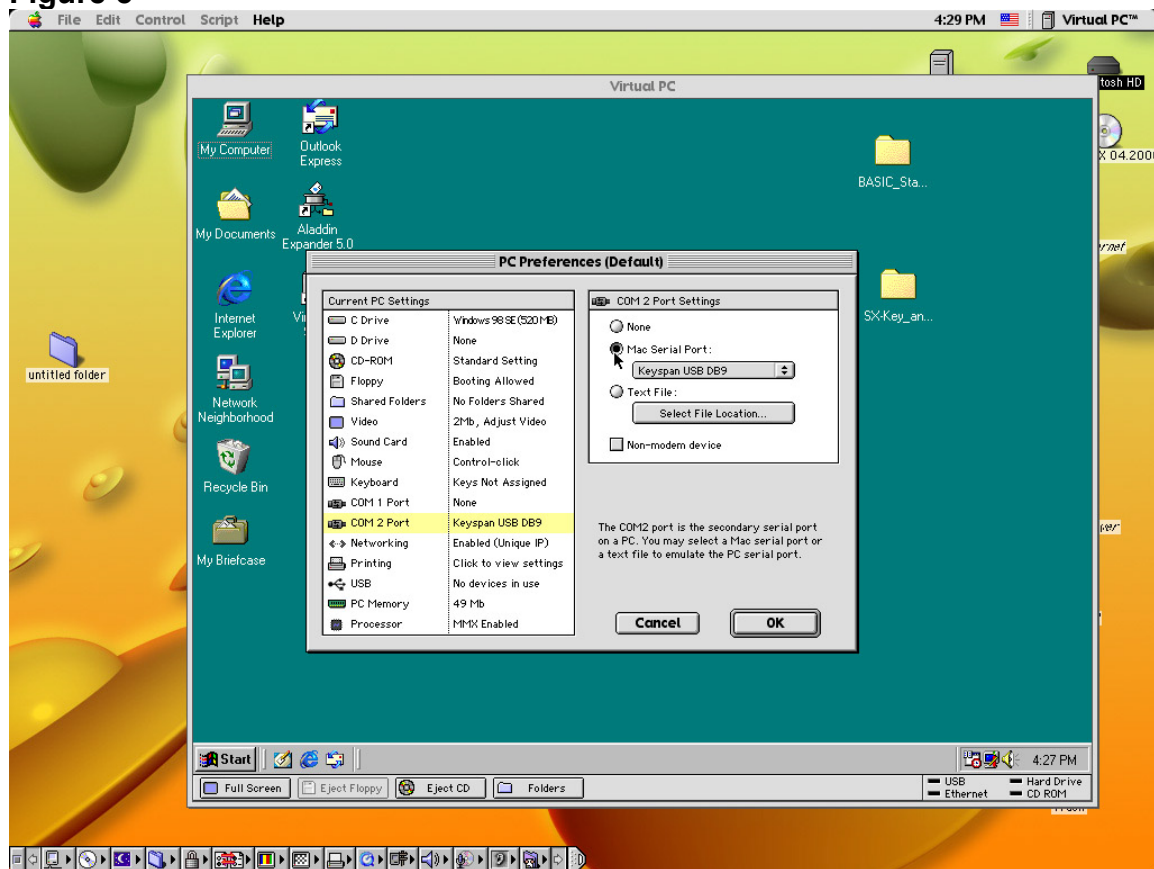


Figure 4



- 7) Select the COM 2 Port setting. See Figure 4. (The COM 2 Port should be the one that is setup for the Keyspan USB adapter).
- 8) Select the Mac Serial Port option and select Keyspan USB DB9 in the pull down menu. Be sure to select the Non-Modem Device. See Figure 5

Figure 5



At this point you will be able to use the BASIC Stamp Windows Interface software (version 1.04 or higher) to program the BASIC Stamps.